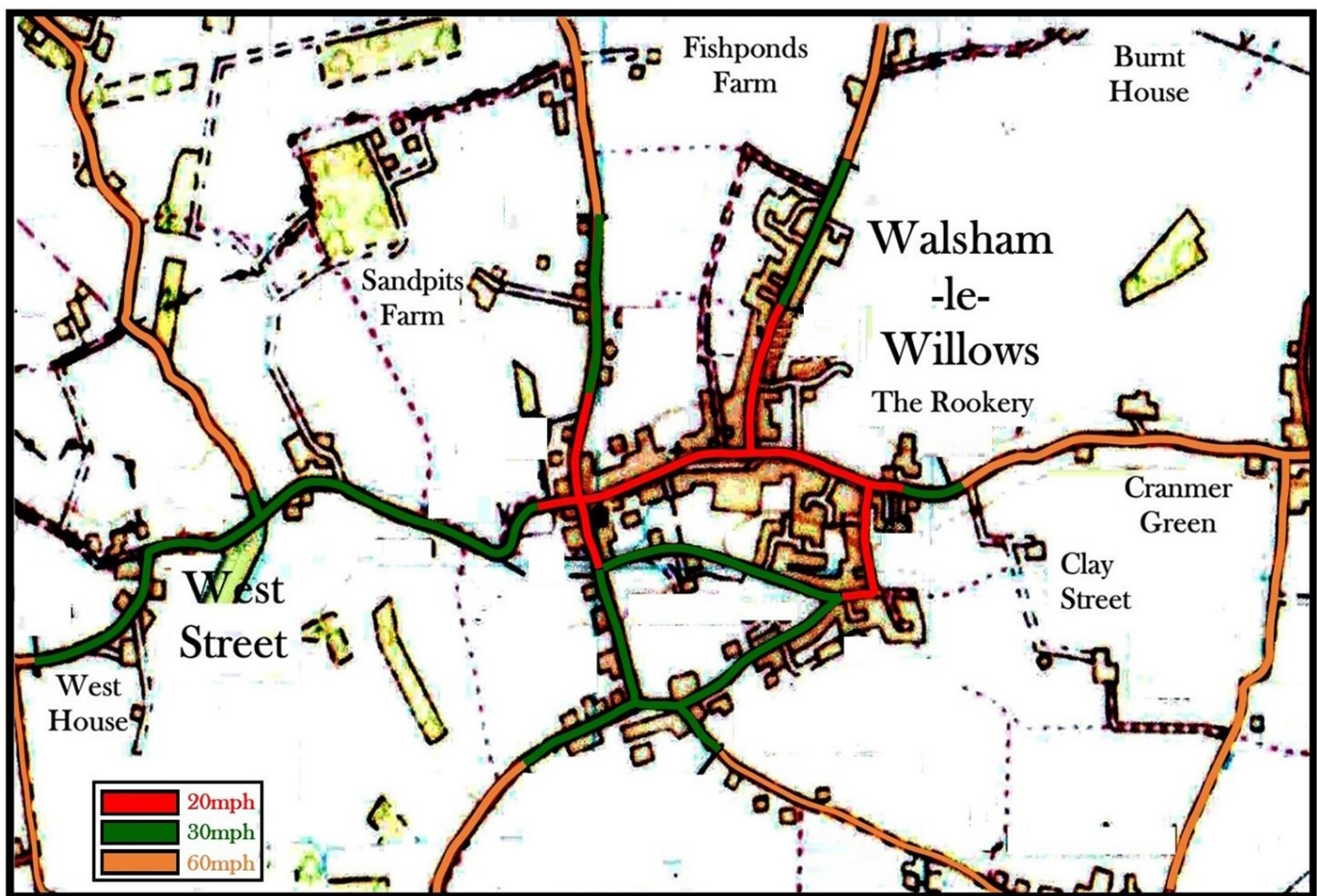


WALSHAM OBSERVER



FEBRUARY 2025



Walsham-le-Willows

Memorial Village Hall

Hire Charges for 2024

All Day £135
Hourly £13.50

For Bookings and Enquiries
Contact Number 01359 258698
(answerphone available)
or email
sarah@octopusadmin.co.uk



Automated External DEFibrillator (AED)

Located in the refurbished red telephone kiosk outside the Memorial Hall this AED has been registered with the East of England Ambulance Service and can be accessed via a digital keypad. The access code can be obtained by simply dialling 999 and asking the Ambulance Service. For reference purposes the location postcode is IP31 3AA.



THE WALSHAM OBSERVER

FEBRUARY 2024

No 671

Published and distributed by the Walsham Community Council.

EDITOR Mr I R Toulson

Tel: 01359-259646 email: iandmj@outlook.com

PRINTED by Gipping Press of Needham Market

Tel: 01449 721599 email: enquiries@gippingpress.co.uk

& DISTRIBUTED BY Volunteers

ITEMS FOR PUBLICATION

These should be dropped by **FRIDAY 21 FEBRUARY** into the box provided in Rolfes or emailed to the editor.

Advertisements should reach the Advertising Manager by **MONDAY 17 FEBRUARY**

ADVERTISING MANAGER Cheryl Bartholomew
01359-258349 walshamobserveradverts@gmail.com

The Community Council takes no responsibility for the accuracy or otherwise of advertisements published in the Walsham Observer.

ADVERTISEMENT RATES

Quarter-page £66 per year £16.50 per month

Half-page £110 per year £22 per month

WALSHAM-LE-WILLOWS COMMUNITY COUNCIL **EXECUTIVE COMMITTEE**

CHAIR Trevor Roberts

01359-251144 acorn-house@hotmail.co.uk

SECRETARY Rob Matthews

07564 906848 armat1950@gmail.com

TREASURER Ian Bartholomew

01359-258349 IBarth2@aol.com

www.walsham-le-willocks.org

Contact telephone number: 01359 258698
(answerphone available)

Contact email: sarah@octopusadmin.co.uk

CONTENTS

Observer Sudoku	1	History Group Meetings 2025	17
Editorial	2	Diary of Events	19
Walsham Primary School	3	Parish Council Minutes	21
Citizens Advice	5	From St Mary's	29
Women's Institute	7	February Church Services	30
Royal British Legion	7	Wildlife in February	31
Community Lunch	7	Epiphany Singers	33
Horticultural Show	9	Observer Crossword	33
Village Hall Update	9	Sports Club Report	35
Searching for Words	9	Sports Club Review	37
Devolution For Suffolk	11	Never Can Say Goodbye	39
Improving Road Safety	13	Spot The Difference	40
More or Less	13	Congregational Church	41
Community Emergency Plan	15	All The Answers	43



WALSHAM OBSERVER SUDOKU

			3	7				
4					8	5		
	6	9	2			8		4
2	5				6			
			4		3			
		8	5				1	9
3		4			2	1	9	
		2	1					3
				3	9			

For the uninitiated, the rules of Sudoku are very simple.

Each row, column and large square must contain the numbers 1 to 9 inclusive.

It's as simple as that, but you must apply logic to find which number goes where.

So, beginner or expert, happy hunting!

EDITORIAL

As I write this Editorial, the world awaits peace, or otherwise, in Gaza, the return of Donald Trump to the White House, the move of 'democratic' countries to the right, the onward 'advance' of Artificial Intelligence and the passing of one-point-five degrees.. Truly we are, at the beginning of the New Year, living in 'Interesting Times' and very uncertain ones. Let us hope that each of these events can be resolved for the good of humanity..

On a less sombre note, there is the **Pop-up Curry Night** in the Village Hall **on Saturday 1st February**. If you have still not got a ticket they are available from Rolfes at £17.50 per head, or from Janette Winch *family.winch@btopenworld.com*. It should be a good evening.

For those who missed the latest **Picturehouse** presentation in the village hall, I have to inform you that the film was an excellent comedy. The sound was far from being comic and could be heard by all, and judging by the queue for seconds, the food was great, even if simple. So look out for the next film, which is on **Friday 21st March**. Details will appear in next month's Observer.

What a great shame for Walsham's football team, in the Third Round of the FA Vase competition. Having played the better football throughout and secured a one-all draw with Whitstable, they then unfortunately went down by four goals to two in the penalty shoot-out. However it is a magnificent achievement to have got so far, and has enhanced the club's reputation.

There are two traffic related matters which are requiring your help, if at all possible. The first being that of **Improving Road Safety**, details of which appear, both on the cover of this month's edition and on page 13. The other is the **73 bus service**, which now appears to be running closer to timetable, judging by the times that the busses pass our house. 'Use it, or lose it' is the old maxim which definitely applies to this service.

Times and habits change and after fifty years, the Women's Institute meetings will now start at 7.30pm rather than at 7.45pm.

There is just time for organisations to apply for grants from the Gardens Weekend. Applications should be made to **Garth Harlow** at *garthharlow@outlook.com* by the end of January.



Following his passing
there is to be a
Memorial Service for
The Life of Richard Martineau
at St Mary's Church Walsham-le-Willows
on Wednesday 29th January at 2.30pm
There will be refreshments in the MVH afterwards

WALSHAM-LE-WILLOWS CEVC PRIMARY SCHOOL

The children in Caterpillars are looking at the story of the first Chinese New Year and acting it out as different characters. They will then be writing labels and captions for traditional tales such as Goldilocks and the Three Bear. They will be looking at animals including humans in their science work.

In Ladybird Class, the children are learning about traditional tales from around the world. They are looking at different textures and mixing them with different materials in science and in maths, they are looking at multiplication and division.

Dragonfly Class are exploring different potions and states of matter in their science. In maths, they are looking at multiplication and division and writing instructions and non-chronological reports in English. They will be looking at different European cities and countries in geography.

Grasshopper Class are looking at ancient Egyptian civilisations and finding out how these people lived and writing biographies. In science they are looking at the properties and changes in materials and using computers for internet research and website designs.

The children in Cricket Class are learning about the Victorians and the how the British Empire developed. They are looking at ratio, decimals and fraction in maths and doing yoga in PE.

Our theme for Collective Worship this half term is Wisdom and Vicar Cat continues to visit us weekly which the children look forward to.

If you wish to make an appointment to visit or would like more information about our school, please contact Mrs McGarr or Mrs Pascoe, on 01359 259319 or by e-mail admin@walsham-le-willows.suffolk.sch.uk We would love to hear from you!

Maxine McGarr



THE MOBILE POST OFFICE

The Mobile Post Office will still be coming to the Village Hall Car Park on Thursday mornings

from 11:00am till Noon till further notice.

Professional Chimney Sweeping

Chimney Matters

Town and Country

Mobile : 07767 864127

Phone: 01284 789663

www.chimneymatters.co.uk

email: chimneymatters@hotmail.com

- Open fires, Wood burners swept and serviced for maximum efficiency.
- Certificates issued.
- Cows and Bird guards fitted.
- Fully insured.



botesdaledental
PRACTICE & IMPLANT CLINIC

Your local,
family run

**Dental
Practice**



Find us on
www.botesdaledental.co.uk



Tel: 01379897176

Email: reception@botesdaledental.co.uk
Botesdale Dental Practice, Holly Close,
The Drift, Botesdale, Suffolk IP22 1DH



Shine n Clean



Residential and commercial window cleaning.
A reliable window cleaning service using the latest
pure water and reach & wash cleaning system,
leaving glass sparkling clean for weeks.
No mess, no smears and no harmful chemicals

01359 259376

email: shinenclean@mail.com

CITIZENS ADVICE

Are you looking for a new car for work, but I can't afford to buy a new one, so you've been looking at second-hand options?

For many people, buying a car is a major purchase and whether it's new or second-hand, the process can seem daunting and complicated. But don't worry, there's lots of information on the steps to take when buying a car and what you can do afterwards if something goes wrong on the Citizens Advice.

First, where are you going to buy the car? If buying from a trader, choose a trustworthy one with an established name with a good reputation. Ideally, they will be part of a trade association or follow the industry's code of practice.

If buying via an auction, this is much riskier as you'll have fewer legal protections like the right to returns or refunds so carefully read the terms and conditions before you bid.

If buying from a private seller, there's a few extra steps to take. For instance, try to inspect the car at their home address so if something goes wrong later, you have a record of that.

Make sure the car's details are correct by using the DVLA's free online vehicle information checker. You'll need the registration number, MOT test number, mileage and make/model of the car to do this check. Also, check the car's MOT history.

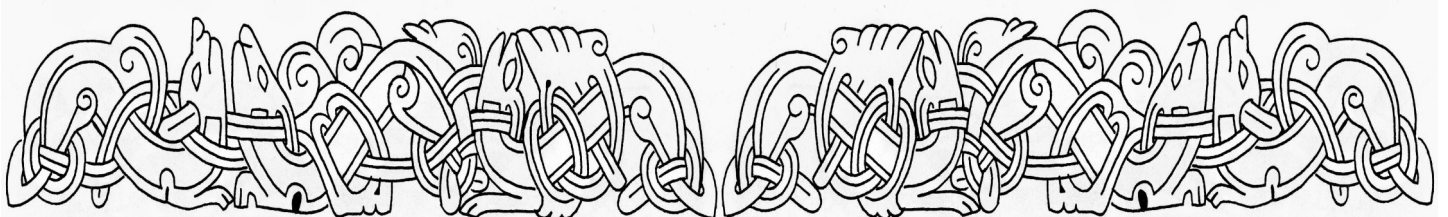
Keep a copy of both these results (take a screenshot or download the information) as well as the original advert or description of the car. You might also consider getting a private history check to see if the car's been reported stolen, still has money owing on it, or has been in a serious crash.

Inspecting the car is crucial before buying. Ideally, do this during the day when it's not raining (scratches are harder to see on a wet car) and take it for a test drive for at least 15 minutes and on different types of roads if possible. Check you have the appropriate insurance for a test drive (either your own or the seller's policy might cover you).

Once you've decided on a car, don't be afraid to negotiate on the price. If you take out a loan or finance to buy it, make sure you can afford the repayments over the lifetime of the contract. If you pay with cash, you will have fewer protections than other options like debit.

Often, despite doing all these checks, you might find something wrong with the car after you've bought it. You may have a legal right to a repair, the cost of a repair or some money back but it's on a case-by-case basis.

Citizens Advice Mid Suffolk can provide in depth advice on this issue and much more, including debt, finances, employment, benefits and family/relationships. You can contact them by phone on 01449 676060, visit in person at Milton House, 5 Milton Road South, Stowmarket IP14 1EZ or use the contact form at midsuffolkcab.org.uk/contact-us. Opening hours are Monday-Thursday 9.30am – 3.30pm and Friday 9.30am – 12.30pm.



CLARKES

OF WALSHAM LIMITED

✓ TIMBER & BUILDING SUPPLIES ✓ GARDEN & FENCING ✓ COUNTRY STORES



SERVING TRADE AND PUBLIC SINCE 1908



www.clarkesofwalsham.co.uk | 01359 259 259

The Street, Walsham-le-Willows, Bury St Edmunds, Suffolk, IP31 3BA



*Oil Fired Pressure Jet Boiler
Servicing & Plumbing*



**ANDY'S
OIL BOILER
SERVICES**

ANDY BACOS

 07775 751303

 andy.bacos@ntlworld.com

 Andy's Oil Boiler Services





WALSHAM LE WILLOWS AND DISTRICT W.I. REPORT



January: Birthday Meal. Drinks, music, food, games, chocolate!

The members of the W.I. enjoyed a social evening with drinks and a chance to catch up with friends before a delicious meal prepared by Sarah Cousins, followed by games.

Next meeting is on 12th February at the **new start time of 7.30pm** –

An introduction to home composting. Plus, a sales table.

New members are always very welcome to come along and visit.

Judith Harlow



STANTON AND DISTRICT BRANCH ROYAL BRITISH LEGION



At a recent C Group meeting the treasurer informed the meeting that the Stanton branch had worked wonders during the past 40 years by raising and donating £100,000 to the Royal British Legion. The branch will continue this with a coffee morning on Saturday 15 February in the Church Rooms, Stanton 10am-12 noon. Please come and support us. You can enjoy light refreshments, friendship and take part in the raffle.

As a result of the Festival of Remembrance, last November we have made a donation of £2,860.65 to the Poppy Appeal. Expenses for this event keep rising year on year. This year the hire of the Apex was £1,550.00. Hire of equipment for the evening was £935.00. Commission for tickets sold on our behalf amounted to £479.00.

Our next meeting will be held on Tuesday 11th February at the Cock Inn Stanton at 8pm.

Hubby Frost



COMMUNITY LUNCH



Hello to you all. I hope you are all keeping warm over this very cold spell but pleased we haven't got any snow yet!

The Memorial Village Hall will be open from 12.30pm on Monday 10th February 2025.

Lunch will be Turkey, Ham and Leek pie, bubble and squeak and peas served at 12.45pm -1pm, followed by Jam Roly Poly and custard. Tea and coffee to follow.

We look forward to seeing you there.

Please book a place, at £8.00, with Shirley on 01359 258532 by 5pm on Thursday 6th February 2025.

Shirley White

GROUNDWORK

&

PLANT HIRE

- Mini Digger & Driver for Hire
- Block Paving & Patios
- Extension Bases
- Driveways & Pathways
- Drainage Work
- Footings & Oversites
- Gardens & Site Clearance

C.S. CONTRACTORS

01284 724048 / 07720843577

108 Horringer Road Bury St Edmunds
IP33 2DP

www.cs-contractors.co.uk



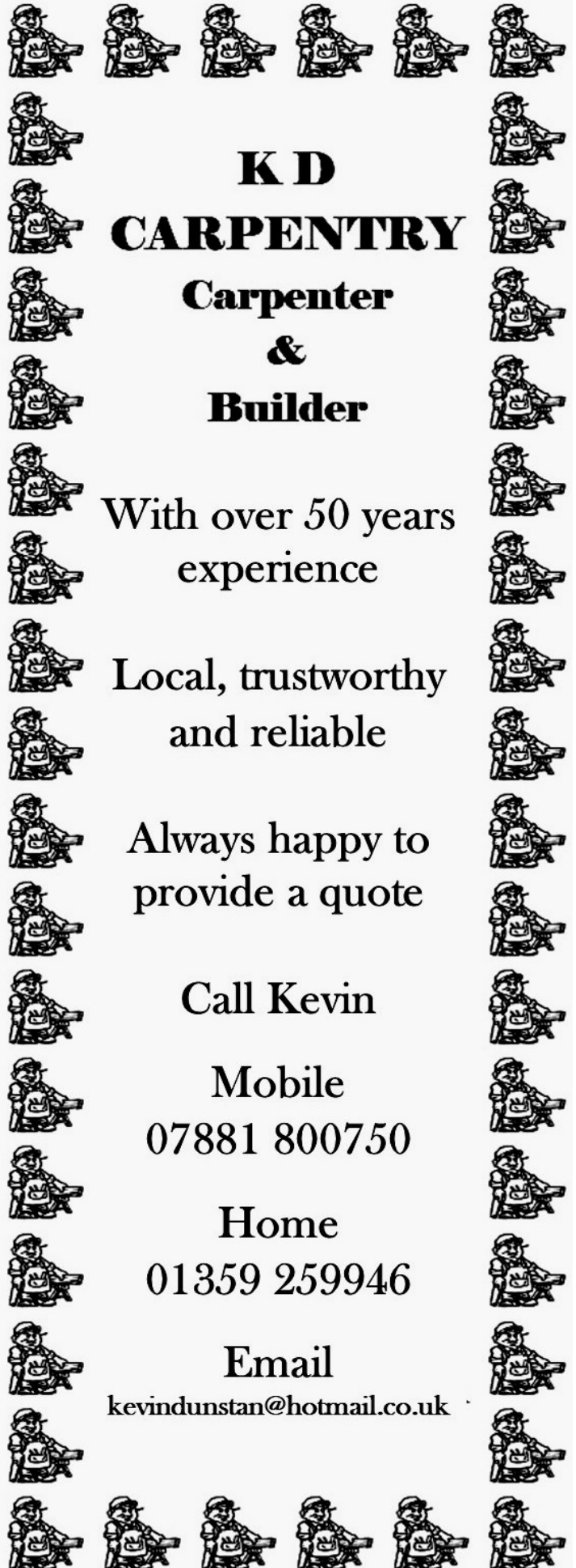
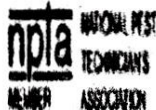
N & S PEST CONTROL SERVICES

RATS! MICE! RABBITS! MOLES! BIRDS! WASPS!
FLIES! ANTS! SQUIRRELS! & MINK!

All effectively controlled by

Norfolk & Suffolk Pest Control
Chris Earith, 2 Orchard Lane,
Pakenham, Nr. Bury St. Edmunds,
Suffolk. IP31 2LQ

Phone: 01359 232538 Mobile: 07885 745446



K D

CARPENTRY

Carpenter & Builder

With over 50 years
experience

Local, trustworthy
and reliable

Always happy to
provide a quote

Call Kevin

Mobile
07881 800750

Home
01359 259946

Email
kevindunstan@hotmail.co.uk

HORTICULTURAL SHOW 2025

This year's Show will be held on the 9 August 2025. Hopefully there will be better weather conditions this season. There are a few changes to last year's schedule:-

Domestic Class 77 has been changed from Men's class to Savoury class.

Novelty Class 100 is intended to encourage children to enter so it has been decided to open this up to grandchildren of Walsham residents.

A new cup – The Challenge Cup will be awarded to the best exhibit in the Floral class.

Please look at the classes printed in this copy of the Observer they can also be found on the village website. There is something for everyone; if you do not grow vegetables, fruit or flowers why not try the Flower arranging, Baking, Photography or the Handicrafts section.

*Debbie Licata
(Secretary)*



VILLAGE HALL UPDATE

After all the festivities are over we now get back to the basics in the Village Hall with all the various classes starting up again in January.

Our Thursday coffee mornings continue to gather pace and we regularly see better attendance every week whilst the January Community lunch saw close to 30 enjoying a meal in pleasant company the next one will be on Monday 10th February.

The Picturehouse film in the Village Hall on Friday 17th January saw over 50 enjoying the meal of bangers and mash followed by ice cream and the film 'Wild Target'. The next presentation will be in March with further details to follow in due course.

The next use of the Hall will be for the Wild Wood's 'Curry night' scheduled for Saturday 1st February

Rob Matthews

SEARCHING FOR WORDS

R	A	L
L	E	T
E	B	A

Starting with any letter and moving horizontally, vertically or diagonally, see how many words of three letters or more you can find, using each letter only once in each word.

There should be one nine letter word which might have you connected.

Get 45 words and you are doing well.

TONY FISHER
PLUMBING & PROPERTY MAINTENANCE

24Hr Emergency Callout Burst, Leaks, Blockage, etc Bathroom/shower installation
Tanks/cylinders/radiators Tiling floors/ walls Painting & Decorating
General DIY jobs Garden maintenance

Tel: 01359 242556 Mobile 07758 327743

Reliable & friendly service

Graeme Green
electrical services ltd



Local qualified electrician with 20 years of experience, offering a friendly and reliable service.

Residential • Commercial • Industrial

Fully Insured.

Available for any sized job.

For a free quote contact Graeme.

☎ 07950 335 966

✉ graemegreenelectrical@gmail.com

📍 Suffolk • Norfolk • Essex



Special cakes
for
special celebrations

Jean Barker 01359 241135

www.amazingcakesbyjean.co.uk



HEAT PUMP SERVICING & REPAIRS

§ Air Source & Ground Source Heat Pumps
§ Air Conditioning Units § Call Outs & Emergencies

Tel: 01359 256209

Email: servicing@letserve.co.uk

DEVOLUTION FOR SUFFOLK

What Are the Plans?

The Government issued its English Devolution White Paper on 16th December. This sets out a desire to see Mayoral Strategic Authorities created in every area of England. In our case this is expected to result in a Mayoral Strategic Authority covering Norfolk and Suffolk.

Separately the Government intends to end the two tier (district and county) council arrangements and replace them with unitary councils across the whole of England.

Mayoral Authority for Norfolk and Suffolk

The Mayoral Authority will likely have its own powers for things like large scale planning decisions, transport and economic development. It would also have its own budget and staffing. If we look at Cambridgeshire and Peterborough Combined Authority they have a £20 million annual budget and have devolved powers to spend up to £800 million on local housing, infrastructure and jobs. The Mayoral Authority would typically have an elected Mayor with representatives from the relevant local authorities.

An example of an issue in our region that you might expect a Mayoral Authority to focus on would be improving east / west rail links. Local businesses have been calling for investment in rail points and signalling at certain key junctions but after several decades of discussion there has been little progress.

The arguments against Mayoral Authorities are usually focused on opposition to yet more government costs and on the concentration of local power in one person's hands. In an area like ours with mixed political representation and the first past the post electoral system, it is quite possible that we will elect a Mayor representing less than a third of the votes cast. Also with low turnout they could represent less than a quarter of the total electorate.

Local Government Reform in Suffolk

The logic of creating unitary authorities is partly to introduce cost savings by removing duplication and partly to do away with all the complications of who is responsible for which element of local government. For example, at the moment the District Council oversees planning decisions but the County Council oversees decisions about highways and schools.

District Councils do however provide a real local connection and have a very strong local focus on their spending decisions. In a unitary council it is inevitable that spending would be more centralised and concentrated on areas like adult social care.

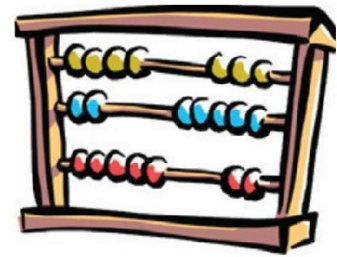
A key question for Suffolk will be whether we end up with one unitary Council for the whole of Suffolk or two or three. One Unitary Council would probably be quicker to set up and might have higher initial cost savings. It would however be a very large Council servicing over 750,000 residents over a huge area. It could easily end up being even more bureaucratic and more remote from residents than currently. There is also the tricky question of how Ipswich (and Norwich) fit into a unitary structure as they have quite different issues from small and medium sized towns and rural villages.

Whatever happens let's hope we are mindful that we are putting in place a structure that will service the people of Suffolk for decades to come so let's try and do the right thing not the expedient thing.

Richard Winch

TWINN ACCOUNTANTS LTD

We offer an efficient and professional accountancy service at a very competitive rate.



- ✓ Accounts and tax returns for Sole Traders, Partnerships and Limited Companies.
- ✓ Self-Assessment
- ✓ VAT returns including MTD
- ✓ Payroll Services

- ✓ Construction Industry Scheme
- ✓ Bookkeeping and Management Accounts
- ✓ Tax Planning
- ✓ Company Secretarial Services
- ✓ Training on Xero and QuickBooks

Tel: **01284 787616**

Email: **info@twinnaccountants.co.uk**

www.twinnaccountants.co.uk

Suite 4, East Barton Barns, Great Barton, IP31 2QY

All accountants are not the same...we promise!

Langham Clinic.

Holistic Beauty & Complementary Therapies

Specialised treatments performed by highly trained & experienced therapists

Sports Massage - Pilates - Manicure & Pedicure
Electrolysis - Red Vein Treatment - Skin Tag Removal
Acupuncture - Oncology Massage - LaStone Therapy
Nutritional Medicine - Aromatherapy - Reflexology
Waxing - Mindfulness - Hypnotherapy - CBT
Dr. Hauschka Treatments (Holistic face & body treatments)

Everything possible at Langham Clinic is organic, sustainable & carbon neutral

www.langhamclinic.co.uk

Langham Grange, Stock Hill, Langham, IP31 3EE

Tel: 01359 258 700

Who starred as Alfie in the film of the same name?



IMPROVING ROAD SAFETY

How Can We Be Heard?



In response to the concerns of many residents, the Parish Council's aim is to advocate to make speed limits lower where people and traffic mix **and** to make rural roads safer in and around our village. Only last month, yet another collision occurred on the bends in West Street with damage to property and two vehicles crossing the carriageway at peak commuting time. Mercifully no other vehicle was close at that precise moment.

A group of members of the community have been working with the Parish Council to reflect the views of the community as a whole and to develop a proposal to work with Suffolk County Council Highways to review and reduce speed limits in and around the village. Recently 96% of respondents said that traffic was a concern and 87% would favour 20mph in certain areas of the village.

In areas such as Surrey and Oxfordshire, local authorities have taken a lead in facilitating wider changes to speed limits in communities where this is supported by local people. Their evidence shows that this has led to road safety improvements. In Suffolk, individual campaigns have worked hard to reduce speed limits within their own communities with Southwold and Bildeston local examples where 20mph is now the legal limit.

The cover map shows the proposed changes to speed limits which the Parish Council with the support of the District Councillor and our County Councillor are campaigning for SCC to make. To show support, add your voices to the campaign as this will be essential if we are to succeed in showing the strength of feeling in our community. The best way to do this is by signing a letter prepared by the Parish Council (to be delivered soon) and/or by writing or emailing our County Councillor: Jessica.fleming@suffolk.gov.uk

If you would like to know more or help the campaign in any way, please contact the Clerk: parishclerk@walsham-le-willows.org

Janette Winch

MORE OR LESS

<input type="checkbox"/>	<input type="checkbox"/>	<input type="checkbox"/>	<input type="checkbox"/>	<input type="checkbox"/>
<input type="checkbox"/>	<input type="checkbox"/>	<input type="checkbox"/> [^]	<input type="checkbox"/> >	<input type="checkbox"/>
<input type="checkbox"/> >	<input type="checkbox"/>	<input type="checkbox"/>	<input type="checkbox"/> [^]	<input type="checkbox"/> >
<input type="checkbox"/> ^v	<input type="checkbox"/>	<input type="checkbox"/> [^]	<input type="checkbox"/>	<input type="checkbox"/> >
<input type="checkbox"/> [^]	<input type="checkbox"/> <	<input type="checkbox"/>	<input type="checkbox"/>	<input type="checkbox"/> >

The numbers 1 to 5 should appear in each row and column.

The greater and less signs indicate the relative size of adjacent numbers.



J W Amps Ltd



Offering service and repairs to all types and makes of garden machinery, ATV's, compact tractors etc.

Machinery bought and sold

Over 15 years experience – factory trained by Briggs & Stratton, Stihl, Westwood and Countax.

Collection and delivery service available.



Contact Simon

Mobile 07974 430366



E-mail: simonamps@btinternet.com

POLLARD & CO



Builders of Integrity

TREVOR POLLARD

Millfield
Wattisfield Road
Walsham Le Willows
Bury St Edmunds
Suffolk
IP31 3BD

Tel & Fax : 01359 258339
Mobile : 07768 124715

- New Houses • Extensions • Renovations
- Barn Conversions • Refurbishments

Email: enquiries@pollardandco.co.uk

COMMUNITY EMERGENCY PLAN

Power Cuts

Power cuts can happen at any time of day or night, so it is important to be prepared, especially in winter when severe weather increases the likelihood of unplanned power cuts.

Tips to help you prepare for a power cut:

1. If you experience a power cut, check whether your neighbours still have power or at night look to see if the streetlights are on. Check that the trip switch in your fuse box is in the 'ON' position.
2. Call **105 (Electricity network operators)** to report a power cut and seek advice. Free to call and lines are open 24 hours a day, 365 days a year.
3. Keep wind-up and/or battery powered torches and spare batteries in an easily accessible place. Avoid using candles as they pose a serious fire hazard.
4. Have a battery operated or wind-up radio for updates, weather reports and entertainment.
5. Keep mobile phones and portable power banks fully charged. Cordless phones will not work during a power cut however traditional corded phones might. Keep a written list of important contact numbers.
6. The temperature can drop quickly during a power cut so consider using blankets and wearing several layers of clothing including hats and gloves to keep warm. Stay active, close doors to unused rooms and draw curtains to retain heat.
7. Use surge protectors for sensitive devices like computers or TVs. Turn off and unplug appliances, particularly those that were in use when the power cut happened, to prevent accidents when power returns. Learn how to manually operate electric garage doors and turn off alarms.
8. Keep fridge and freezer doors closed, as far as possible, to protect the contents. Your fridge will keep food safe for up to 4 hours, provided that the doors are kept closed. Stores of bottle water, non-perishable and easy to prepare meals will be of help during a power cut.
9. Check on neighbours who may need help, ensure that they are safe, reassured, have food, drinks and warmth. Share resources like torches, batteries or warm drinks. Consider visiting friends or family in unaffected areas until power is restored. If a prolonged power cut is forecast the WLW Community Emergency Plan will be activated and an Emergency Rest Centre will be set up in the Village Hall.
10. Ensure essential medical equipment has battery backup and your stair lift has a manual release handle to bring it to ground level.
11. If someone in your household needs extra help during a power cut, sign up to the **Priority Services Register**. This free service aims to provide support to customers in vulnerable circumstances. To register call **0800 169 9970** or register online at **nationalgrid.co.uk/psr**
12. Leave a light switch turned on so you will know when power is restored.

Walsham le Willows Parish Council

Stuart Walker

Decorating, Painting & Refurbishments

A locally based company offering
an honest and reliable service.

Painting - Decorating - Refurbishments - Repairs

All work considered indoors & out!
Fully Insured & free quotations provided.



Please contact Stuart on Tel: 07711 606464 or Email: stuma1@hotmail.co.uk

POTTER'S

ALL SEASONS GARDEN SERVICES

Lawn Mowing & Edging

Strimming & Hedge Cutting

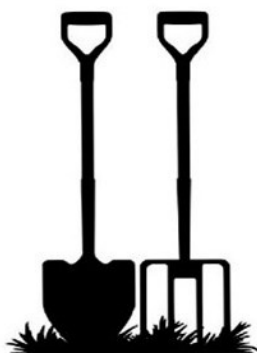
Planting, Pruning & Weeding

Border Maintenance

Graveside Maintenance

Vegetable Tending

Leaf Clearing



Contact: Gary 07519 890179

Public Liability Insured

The Priory Room

The Priory Room in Walsham
is available to hire for private functions.

For bookings or further information, please contact:

John Boulter 07908 010555 johnboulter@yahoo.com

HISTORY GROUP MEETINGS

For 2025

- Wed 19th March** **Stephen Poulter** Local Historian **Suffolk's Lost Heritage** explores some architectural gems of historic buildings, grand mansions and medieval churches which have disappeared from our landscape over the past centuries.
- Wed 16th April** **Edward Martin** Archaeologist and landscape historian **Farming the Suffolk Landscape: Patterns, changes and impacts** reveals how a variety of soils and ways of farming has led to different types of landscape across the county.
- Sun 27th April** **Spring Walk** – meet at the Six Bells
- Wed 21st May** **Paul Jordan** Retired Forensics Officer with the Met. **My life in specialist and covert operations** covers Paul's career from a divisional detective in the Met to the world of specialist and covert operations.
- Wed 16th June** **Paul Hunt** Military Historian **D-day and beyond:** Explores 'Operation Overlord' the joint allied invasion of mainland Europe, which took place on 6th June 1944, the largest combined operation in military history. Includes genuine WW2 artifacts.
- Wed 17th Sept** **John Henry-Phillips** author, archaeologist, film-maker and presenter of C 4's 'The Great British Dig'. **The Archaeology of the Romani Gypsies** uncovers 500 years of laws aimed at repressing the Romany people and reveals the results of John Henry's recent archaeological excavations in the New Forest.
- Wed 15th Oct** **The Orwellmen Songs of the Sea:** An evening of sailor's sea shanties and the stories behind them.
- Wed 19th Nov** **Dr Richard Hoggett** Historian, author and heritage consultant. **Viking Age East Anglia:** This talk explores the evidence for the Viking presence in East Anglia, from the initial campaign of the Great Heathen Army including the martyrdom of King Edmund.
- Tues 9th Dec** **Kate Jewell** Medieval Historian **Cakes, ale and partying: Feasting and Fundraising in Medieval Suffolk** looks at traditions and how people celebrated festivals throughout the year.

All evening meetings are in the Priory Room starting at 7.30pm

Contact Frances Jenner on 01359259242 or frances-jenner@hotmail.com



1StopBlinds

Your Local Blind Maker

- Made to Measure **Window Blinds Specialists** in and around Bury St Edmunds for over 35 Years -

- ✓ Hassle-Free Measuring and Fitting Service
- ✓ Blinds Made Locally in Bury St Edmunds
- ✓ Bury St Edmunds Factory Showroom
- ✓ Local, Family Run Business
- ✓ Home and Workplace Blinds
- ✓ Over 35 Years of Experience

*For Advice and a Free, No-Obligation Quotation
Book an In-Home Appointment or Visit Our Factory Showroom at:*

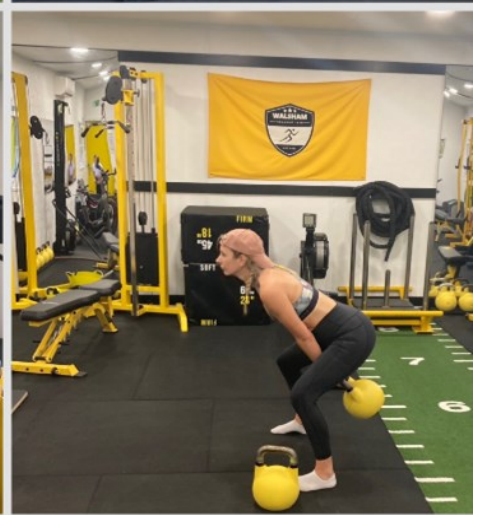
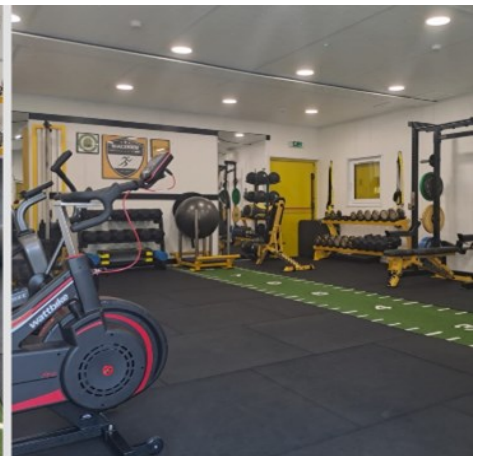
📍 Unit 4, Brunel Business Court, Eastern Way, BSE, IP32 7AJ

Tel: 01284 761333

Email: info@1stopblinds.co.uk
Web: www.1stopblinds.co.uk



- monthly membership
- personal Training
- bootcamps
- open 6am to 10pm everyday
- walshamgym@gmail.com



What punishment was finally ended in 1969?

DIARY OF EVENTS

FEBRUARY		JUNE	
Sat 1st	Wild Wood Pop-up Curry Village Hall TBA	Tues 10th	W.I. Bowls Taster Bowls Green 7.00pm
Wed 12th	W.I. Home Composting Priory Room 7.30pm	Wed 16th	History Group Priory Room 7.30pm
MARCH		JULY	
Wed 12th	W.I. Forensic Pathologist Priory Room 7.30pm	Sat 9th	Horticultural Show Village Hall 2.00pm
Wed 19th	History Group Priory Room 7.30pm	Sun 24th	Open Gardens
Fri 21st	Picturehouse Village Hall 6.30pm	Mon 25th	Weekend
APRIL		SEPTEMBER	
Wed 9th	W.I. Floristry Demo'n Priory Room 7.30pm	Wed 17th	History Group Village Hall 7.30pm
Wed 16th	History Group Priory Room 7.30pm	OCTOBER	
Sun 27th	History Group Village Walk 10.30am	Wed 15th	History Group Priory Room 7.30pm
MAY		NOVEMBER	
Wed 14th	W.I. Annual Meeting Priory Room 7.30pm	Wed 19th	History Group Priory Room 7.30pm
Wed 21st	History Group Priory Room 7.30pm	DECEMBER	
		Tue 9th	History Group Priory Room 7.30pm

WALSHAM & DISTRICT W.I.

HOME COMPOSTING

An Introduction by David Wright
in the Priory Room

Wednesday 12th February at 7.30pm

NEW MEMBERS ALWAYS WELCOME

Ladies are able to attend 2 meetings free of charge before joining.



WALSHAM SPORTSCLUB EVENTS FOR February & March



Sunday Night Bingo

2nd & 16th February 7pm
2nd, 16th & 30th March 7pm

Speed Quizzing

Sunday 23rd February 7pm
Sunday 23rd March 7pm.
PYCR + Smart phone Bingo

Friday Evening Quizes

7th February 7.30pm
7th & 14th March 7.30pm



Irish Night

Saturday 8th March. From 7pm.
Live Irish band The Great Craig,
Bar and hot food plus annual raffle .
Tickets £8 (before) or £12 (door).
From Gordon on 07742 111892,

For further information phone Julian 07597340273



We provide independent financial advice in the following areas:

- **Savings and Investments**
- **Retirement Planning**
- **Long Term Care Plans**
- **Estate Planning and Family Wealth Preservation**
- **Mortgages**
- **Equity Release**
- **Financial Protection**

10 Forbes Business Centre, Kempson Way, Bury St Edmunds, IP32 7AR
admin@metritawm.co.uk
01284 700619

Tax planning is not regulated by the FCA

Metritá Wealth Management is a trading name of Metritá Wealth Management Ltd which is an appointed representative of 2plan wealth management Ltd. It is authorised and regulated by the Financial Conduct Authority under no: 838586. Registered address: 10, Forbes Business Centre, Kempson Way, Bury St Edmunds, IP32 7AR. Registered in England and Wales under no. 11832336.



WALSHAM LE WILLOWS PARISH COUNCIL MINUTES

of the meeting held on Wednesday 8th January 2025 commencing at 7.00 p.m. in the Memorial Hall.

[Informally approved. Formal approval, at the next meeting with any corrections]

PRESENT: Cllrs. Bartholomew, Belson, Mecrow, Roberts, Tuck, Winch.

ALSO PRESENT: District Councillor Richard Winch & County Councillor Jessica Fleming

1. OPENING STATEMENT (if any required)

None

2. APOLOGIES

a. Cllr Brookes for reason of illness.

b. Consent was given.

3. DECLARATIONS of Pecuniary & Non-Pecuniary Interests

a. To receive declarations of pecuniary, local non-pecuniary interest(s) including personal interests in items on the agenda and to include declarations of any gifts of hospitality – none received

b. To receive declarations of lobbying for planning matters on the agenda – none received

c. To receive requests for dispensation – none required

4. MINUTES - To receive and consider the minutes of the following meetings (as previously circulated)

a. Minutes of the meeting held on 11th December 2024 were approved as true and accurate record for signing.

b. Outstanding actions from last meeting were reviewed

i. The Clerk advised that a quote for dealing with the ivy had come in from David Brown just after the agenda was published in sum of £350. It was agreed that this work should go ahead. Clerk to action.

ii. Cllr Roberts was able to confirm that a full meeting of sports club trustees has not yet taken place, so the feedback has not yet been given.

5. PUBLIC OPEN FORUM (POF) - To receive questions and matters of concern from members of the public in attendance with regard to items on the agenda and any other matters.

No members of public were present.

6. REPORTS FOR INFORMATION & QUESTIONS - to receive written reports & put questions:

**2025
HORTICULTURAL
SHOW
SCHEDULE**

The Horticultural Show will take place on Saturday 9th August 2025. The fruit and vegetable and floral classes are listed below. We have several new recipes for you to try in the domestic classes, they will all appear in the July Observer, but if you want to start practising, they will be on the Walsham website soon. NB Class 82 the chutney, has a set recipe and needs to be made at least 3 months in advance, the recipe is in this month's Observer, and will also be on the website.

Have a look at the Photographic Classes and start looking out early for great photos; download the knitting pattern or ring Debbie Licata 259686 for a copy and start knitting right away.

HORTICULTURAL SHOW CLASSES 2025

FLORAL CLASS

1. PANSY or VIOLA One flower in a vase.
2. CLEMATIS One flower in a vase.
3. SWEET PEAS (Annual) Six stalks in a vase
4. ROSES Hybrid tea with own foliage – one bloom in a vase.
5. ROSES Spray – one stem in a vase.
6. HERBS Two or more culinary varieties, five stalks in a vase.
7. MIXED ANNUALS Two or more varieties – five stalks in one vase.
8. PERENNIALS Two or more varieties – five blooms in one vase.
9. DAHLIAS Ball or Pompom – any size – five blooms in a vase.
10. DAHLIAS Small or large cactus and/or semi-cactus. Assorted or same variety – three blooms in a vase.
11. DAHLIAS Decorative, small or large, assorted or same variety. Three blooms in a vase.
12. LILIES One stem.
13. GLADIOLI Giant, large or medium flowers
assorted or same variety. Three stalks in a vase.
14. HYDRANGEAS Three heads in a vase.
15. HOUSE PLANT Flower type – any variety in a pot. (Max 12² pot)
16. HOUSE PLANT Foliage type – any variety in a pot. (Max 12² pot)
17. CACTI or SUCCULENTS (Max 8² pot)
18. FLOWERING TREE OR SHRUB Three sprays of flowering tree or shrub in a vase
– assorted or same variety, other than Hydrangeas.
19. GERANIUM or PELARGONIUM One plant in a pot. (Max 10² pot)
20. FUCHSIA Upright – any variety. (max 10² pot)
21. FUCHSIA Trailing – any variety. (max 10² pot)
22. HOSTA One plant in a pot (max 12” pot)
23. FRAGRANCE - A Fragrant flower, single stem (any variety)

FRUIT AND VEGETABLE CLASS

30. BEANS Dwarf French – five on a plate.
31. BEANS Runner – five on a plate.
32. PEAS - Five pods on a plate.
33. BEETROOT Red - three round. (tops on and tied)
34. CABBAGE Any variety - one cabbage 3” stalk.
35. CARROTS Three, (tops cut to 4” and tied individually)
36. COURGETTES Long type, any colour less than 8” – three on a plate.

37. CUCUMBER Outdoor Grown, any variety, one only
38. CUCUMBER Grown under protection, any variety, one only.
39. LETTUCE Any variety – one on a plate.
40. MARROW Any variety – one only.
41. SQUASH Any variety winter or summer – one only
42. ONIONS: LARGE (over 8oz) Any variety – three only – tops tied.
43. ONIONS: SMALL (under 8oz) Any variety – three only – tops tied.
44. SHALLOTS Any type – six only – tops tied.
45. GARLIC Any variety – three only, 3” stem, remove roots
46. POTATOES White – one variety – five only.
47. POTATOES Coloured – one variety – five only.
48. TOMATOES Red - any variety, five on a plate.
49. TOMATOES Other than red, five on a plate.
50. TOMATOES Cherry - red or coloured, seven on a small plate.
51. PEPPERS Any variety – three on a plate
52. ANY OTHER VEGETABLE Matching pair of any vegetable not otherwise in schedule.
53. APPLES Eating – three on a plate.
54. APPLES Cooking – three on a plate.
55. BERRIES Nine on a small plate – other than raspberries. One or more varieties.
56. PLUMS or GAGES Any one variety – five on a small plate.
57. RASPBERRIES Nine on a small plate.
58. ANY OTHER FRUIT Any fruit not otherwise on schedule, three on a plate **or** grapes one bunch.
59. TRAY OF VEGETABLES Four varieties of vegetables arranged decoratively within an 18”x12” box or tea tray selected from classes 30 – 51
(Double points for class 59)

DECORATIVE CLASS *Flowers do not have to be grown by arranger. No height limits. Table depth 65cm.*

60. EXHIBIT: Strawberries and Cream (*up to 30cm width*).
61. EXHIBIT: The Sea Shore (*up to 60cm width*)

DOMESTIC CLASS

70. CHEESE SCONES - Six on plate - own recipe.
71. VICTORIA SANDWICH – (8”/20cm tin, jam filling, 3 eggs) own recipe.
72. SEEDED LOAF - own recipe.
73. GINGER OAT BISCUITS - six on a plate - **Recipe given.**
74. BATTENBURG – **Recipe given.**
75. TARTE TATIN 8”/20cm – own recipe.
76. CHOCOLATE GATEAU with decorative top – **Recipe given**
77. SAVOURY CLASS – TWISTED CHEESE STRAWS – 6 on a plate - own recipe.
78. EGGS - Six displayed in a plain egg carton.
79. FRUIT MARMALADE - One Jar.
80. FRUIT JELLY - One Jar.
81. FRUIT JAM - One Jar.
82. CHUTNEY – Rhubarb and Ginger - One Jar (minimum 3 months old)
Recipe given
83. HONEY – One Jar.

No points awarded for the following classes

90. **SUNFLOWER CUP** For the tallest sunflower growing in Walsham: measured *in situ* the week of the show. Open to all ages.

91. **HANGING BASKET / GARDEN TUB COMPETITION** for the best display in a single container viewed *in situ* the week of the show.

PHOTOGRAPHIC CLASSES - *No larger than 5"x 7", a small mount is permitted; all photos must be taken in the Walsham area.*

92. MOONLIGHT

93. AGRICULTURAL MACHINERY

94. WILDLIFE (non-domestic)

HANDICRAFTS CLASSES

96. KNITTING – Buttoned Neck Warmer. Pattern available from Debbie Licata (259686) also on village website.

97. WOODWORK – Decorated door wedge (hand-carved no lathe).

NOVELTY CLASSES

99. Longest French bean.

100. Decorated 9” paper plate using dried seeds, pulses, pasta and glue.

Recipe Class 82 –Rhubarb and Ginger Chutney

INGREDIENTS (fills approximately 6 jars)

2½lb Rhubarb – cut small

½lb Onions – minced

1lb Sugar

¼ oz Ground Ginger

¼ oz Curry Powder

¼ oz Salt

¾ Pints vinegar

METHOD

With ¼ pint vinegar place all ingredients in a pan and cook slowly until rhubarb is tender. Add remaining vinegar and simmer gently until a thick consistency.



LECTEC LTD

T: 01359 342 538

M: 07377 153 954

E: contact@lectec Ltd.com

◀ RENEWABLE

◀ HEATING & COOLING

◀ ELECTRICAL

**CHECK WITH US
TODAY ABOUT
ZERO-RATED VAT
INSTALLATIONS
& GOVERNMENT
GRANTS**

- All Electrical Installations including Certification
- EICR (Property Testing)
- Solar PV Panel Installations, Clean & Maintenance
- Battery Storage Installations
- Electric Heating Installations, Service & Maintenance
- Air Conditioning Installations, Service & Maintenance
- Heat Pumps Installations, Service & Maintenance

Professional & Reliable Service



RESIDENTIAL - COMMERCIAL - INDUSTRIAL

Why do solar panels never get tired?

...because they are always recharging!

Call us on 0207 247 3650
info@mygreenenergy.co.uk



SOLAR PANELS › BATTERY STORAGE ›
CAR CHARGING POINTS



For an EXTRA 10% off your solar project call now and quote code: GET10



- a. County Councillor Fleming referred to her report
 - i. District Councillor Winch raised an issue with the wording of Cllr. Fleming's report on the subject of devolution for Norfolk/Suffolk. There was a difference of opinion on the extent to which a quick response within the timescales set will not allow proper scrutiny and public engagement particularly as it is probable that many residents are still unaware of the early proposals. Cllr Fleming explained that the County Council had been put in a difficult position by central government and that unlike previous proposals, unanimity amongst the authorities involved was not required for the current proposal to go forward, so to fail to respond within the tight timescales that had been set, and not to request a deferral of elections, would lead to SCC effectively having no voice at all in the proposals.
 - ii. Cllr Bartholomew raised the issue of the ongoing lack of response re the cutting of the hedge outside Elmside Lee despite the fact that SCC have acknowledged that it is their responsibility to either have it cut or get the landowner (from whose land the growth appears to emanate) to cut it back (within published timescales). Cllr Winch proposed a working party of Parish Councillors & Clerk to get the job done this coming Saturday 11th January. Cllr Roberts will bring a trailer for the arisings.

b. District Councillor Winch

- i. District Cllr. Winch posed the question for the Parish Council of where a new bus shelter, if any, should be located for the new bus service that will pick up passengers from the vicinity of the Six Bells. He felt this is an issue that is going to be raised by users of the service. After discussion it was decided that advice needed to be taken from Josh White (SCC highways) and planning at MSDC, re the erection and siting of a bus shelter in a conservation area anywhere in the sightlines of a Grade I Listed Building (St Marys Church).
- ii. Cllr Mecrow asked if, as a result of the new central government house building requirements on Local Authorities (when these are known), the Neighbourhood Plan (NP) should be amended. The advice was that it would be better for the new housing requirement numbers to be included in any update to the Neighbourhood Plan.

7. REPORTS FROM WORKING GROUPS (Flood, CEP, Traffic) & ACTION LOG REVIEWS

- a. Traffic Group** – The circulated report was noted. Cllr Winch asked that councillors reviewed the draft 20's Plenty insert for The Observer and the door knocking scripts and letter. These were approved with one minor suggestion. It was agreed that more bin stickers may be needed. Clerk to order some more. Cllr Bartholomew suggested a front page splash in The Observer as well. Council agreed £35 for Observer colour insert. Door knocking is planned for February and Cllr Winch asked for volunteers to assist with this exercise.



JUST A GARDENER

HONEST - HARDWORKING - RELIABLE

**LAWN CARE - GRASS CUTTING
BORDERS - PLANTING - WEEDING
HEDGING - SHRUB PRUNING
HEDGE TRIMMING - STRIMMING
EDGING - PA1/PA6
PESTICIDE APPLICATION
QUALIFIED**

**PLEASE CALL DEAN OR EMAIL TO
DISCUSS ANY GARDENING NEEDS
OR REQUIREMENTS**

MOB: 07720971165

**EMAIL: JUSTAGARDENER1965@GMAIL.COM
BASED IN WALSHAM LE WILLOWS
COMPETITIVE RATES/PRICES.**

BROWN'S



SERVICE

**All Types of
Tree Surgery
Undertaken**

**Thinning Reductions
Deadwooding Felling
Storm Damage**

**All types of hedges, shrubs
and fruit trees pruned.**

**Seasoned logs and
woodchip mulch delivered**

For a Free Quote ring

01359 259149

Mobile 07881 816761

**Chainsaw Certificate
City & Guilds Qualified
Public Liability Insurance**



M A Heating Services



- * Oil, Gas and LPG boiler servicing, replacements and repairs**
- * Repairs to central heating system faults i.e. pumps, programmers and cylinders**
- * Servicing and repairs to Rayburn, Aga Stanley and Esse**
- * Landlord's Certificates**

Telephone: 01379 783427

Wickham Gate, High Street, Gislegham, Suffolk, IP23 8JD

- b. Flood Group** – Nothing to report. Cllr Bartholomew [?] asked about the progress with the S19 investigation which was due to complete mid December. Clerk to seek update.
- c. CEP Group** – Circulated report was noted and it was advised that First Aid training (15 places) was due to take place on 1st February.
8. PARISH COUNCIL OBJECTIVES 2024/25 (not covered under working groups - Footpaths, Shepherd's Grove, Bus Routes, Local Plan)
Nothing to note
9. PLANNING, LICENCING & RELATED MATTERS
- APPLICATION FOR WORKS TO TREE(S) IN A CONSERVATION AREA - DC/24/05584 Proposal: Notification of Works to Trees in a Conservation Area - Fell 2 No. Pine (T1 and T2) Location: High Hedges, Palmer Street, Walsham Le Willows, Bury St Edmunds Suffolk IP31 3BZ **The Parish Council Made No Comment.**
10. PLANNING OUTCOMES (decided by Mid Suffolk District Council, Planning Authority) for noting only -
- a. APPLICATION FOR ADVERTISEMENT CONSENT - DC/24/04267 Proposal: Application for Advertisement Consent - Construction of 2No externally illuminated Fascia signs and a 1No welcome sign. Location: Linton House, The Street, Walsham Le Willows, Bury St Edmunds Suffolk IP31 3AZ **MSDC Granted Permission.**
- b. APPLICATION FOR PLANNING PERMISSION - DC/24/03403 & associated Listed Building Consent DC/24/03404 - Proposal: Householder application – Re-render all elevations, re-roof main house and lean-to, lay new limecrete floors, demolish front porch, repair/rebuild 3 no. chimney stacks, reinstate former door in rear elevation, widen 3 no. windows, replace gable door with window, replace front door, re-open 2 no. fireplace recesses, unblock internal doorway, remove internal partition, demolish partially collapsed outbuilding, demolish brick outbuilding. Location: The Woodlands, Finningham Road, Walsham Le Willows, Bury St Edmunds Suffolk IP31 3BQ **MSDC Granted Permission.**
- c. APPLICATION FOR PLANNING PERMISSION WITHOUT COMPLIANCE OF CONDITION(S) - DC/24/04893 Proposal: Application under S73a for Removal or Variation of a Condition following grant of Planning Permission DC/24/00034 dated 07.05.2024 Town and Country Planning Act 1990 - Erection of detached single storey building to provide ancillary accommodation. - To vary Condition 2 (Approved Plans and Documents) To move the position of the proposed building. **Location:** 2 Avenue Cottages, The Street, Walsham Le Willows, Bury St Edmunds Suffolk IP31 3AZ **MSDC Granted Permission With Further Conditions.**

Elite Fencing and Landscaping

JUST 10 MINUTES AWAY FROM YOU.
FENCING, GATES, DECKING, PATIOS,
PERGOLAS, PATHS, BASES,
TURFING, DEMOLITION,
REGRAVELING DRIVEWAYS,
GARDEN CLEARANCE,
GARDEN PROJECTS & RESTORATION,
REPAIRS, ODD JOBS & MORE!

ALL TYPES OF OUTDOOR WORK
UNDERTAKEN - SMALL OR LARGE
FOR FREE ESTIMATES CALL TREVOR
ON 01359 221128 OR 07761651567
EMAIL

TREVOR@ELITE-FENCING.CO.UK
WEB: WWW.ELITE-FENCING.CO.UK



FLP Motors

*Your One Stop
Friendly Garage*

- * MOT's (Class 4 & 7 Up to 3500kg)
- * MOT Repairs
- * Diagnostics
- * Servicing (Inc under 3 years old)
- * Cambelts
- * Brakes, Tyres & Exhausts
- * 4 Wheel Laser Alignment (tracking)
- * Clutches
- * Air Conditioning Servicing
- * All Repairs Carried Out

Free Collection and return
or courtesy car available

Call Vic: 01359 250671

Flpmotors.com

MOT's £40 with this advert (Class4)

Unit 23a, Shepherds Grove Ind Est
Stanton IP31 2AR



M.B PAINTING AND DECORATING

M.B Painting and Decorating

We are a professional, reliable, and trustworthy painting and decorating company based in Suffolk, specializing in both small and large domestic, residential, and commercial projects.

We pride ourselves on our quality finish and attention to detail and ensure that we invest time with our clients on all projects to make sure we have a good understanding of their requirements whilst working within budget constraints.

Please contact Max on 07805716359 or by email for a free quotation: maxboulterpainting@gmail.com

11 FINANCE & AUDIT

- a. Bank reconciliation for period ending 31st December 2024 was approved for signature.
- b. Accounts awaiting payment summary and invoices for payment were approved for processing. (Appendix 1).

12 CLERK ACTION LOG, COUNCILLOR REPORTS & CORRESPONDENCE (if not dealt with elsewhere)

- a. To consider clerk's action log – nothing of note or concern.
 - i. Cllr Mecrow has noted use of footpaths by horse riders again and proposed minuting the fact that there is only one bridleway in the village running from the corner in West Street next to West Street Farm over to Wyken. The Parish Council asks that horse riders respect the fact that footpaths are for walkers and that using them as bridleway, particularly at this time of year, makes walking on them difficult.
 - ii. Cllr Mecrow reported back on his attendance at a presentation on Rural Led Community Housing organised by Community Action Suffolk which he explained in a lot of detail how a trust is set up to achieve greater control over housing that is built, where it is built and on specification of type of occupant. He felt that the possibility of pursuing such a scheme should be kept in mind with local housing for local people in mind to support village cohesion. This was noted with interest. It was suggested that this idea should be kept on the agenda for annual consideration and at the point of review of the Neighbourhood Plan.
 - iii. Cllr Bartholomew raised the issue of the review of the Neighbourhood Plan which probably needed about 3 months to complete. The Clerk confirmed from records that a review is due to be completed by 14/02/2026 which means that work on this should commence in the summer of 2025. It was agreed that the Parish Council would inform the District Council of the intention to review and convene a group of Parish Councillors to expedite this, with invitations to other key people. Clerk to check on funding to NP reviews.
- b. To consider any other matters not covered elsewhere on the agenda
 - i. Cllr Mecrow noted the drain in the corner behind the fence along Swan Path was blocked and running across Swan Path. Clerk to contact Clerks to ask that this is cleared.

13. MEETING CLOSE

- a. Meeting closed at 20:41
- b. Next Parish Council Meeting – 12th February 2024 7pm – Memorial Hall.

APPENDIX 1

Payments for Authorisation January 2024

MEN ARE WELCOME to join!

Y O G A

FOR EVERYONE

MONDAY Evenings ongoing

NEW!

TUESDAY Evenings Everyone welcome.
Nov. 12th, 19th, 26th, Dec. 3rd, 17th

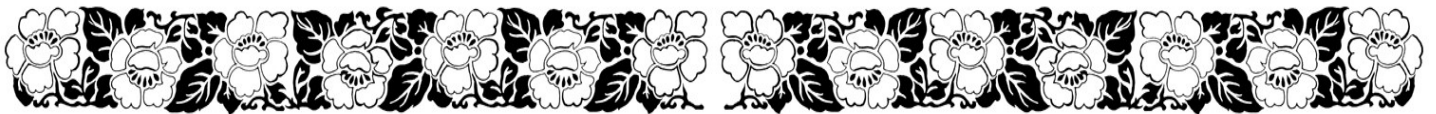
At The Priory Room
IP31 3AB, 7:30pm-8:45pm
Cost £9.50 PAYG
or £8.50 advance book

EMPOWER YOUR DAILY MOVEMENT

Lindsey's style is Gentle Hatha Yoga with mindful movement. Variations are offered for comfort and ease. Email to book. Lindsey is a trauma informed teacher available for 1:1 private sessions and kid's school groups.



Yoga Alliance Professionals accredited 200hr teacher, Insured with First Aid cert and DBS
E: hello@little-spoonful.co.uk Tel.07944595098 www.little-spoonful.co.uk



#	Payments OUT	Amount	Description
1	Nurture Landscapes Ltd	£132.00	Extra cut verges and play area - December
2	Memorial Hall	£27.00	Hall hire PC meeting December
3	Suffolk County Council	£1,332.00	Streetlight column replacement
4	HMRC Cumbernauld	£275.05	Employers PAYE
5	Parish Council Employee	£962.55	Wages
#	Payments IN & Other Payments/Transfers	Amount	Description

What is the correct name of the 'Hedge Sparrow'?

FROM ST MARY'S CHURCH

The Light of Christ and the Love of God

As February begins, the Church celebrates the feast of Candlemas, marking the Presentation of Christ in the Temple. This ancient tradition commemorates the moment when the infant Jesus, the Light of the World, was brought to the temple by Mary and Joseph, fulfilling Jewish customs and receiving the blessings of Simeon and Anna. Candlemas is a time to reflect on Christ as the light that shines in the darkness, a beacon of hope and love for all people.

Simeon's words, often referred to as the Nunc Dimittis, speak of Jesus as "a light to enlighten the Gentiles and the glory of your people Israel." His joy at seeing the Messiah reminds us of the profound gift of God's love. Christ's presence in the world brings salvation, and we are called to carry that light into our own lives, sharing it with those around us.

This theme of light and love also echoes in the celebrations of February, particularly Saint Valentine's Day. While modern customs may emphasise cards, chocolates, and romantic dinners, the story of Saint Valentine is one of faithful love and sacrifice. He is believed to have been a Christian priest in the third century who, despite persecution, continued to minister to couples and promote the sanctity of marriage. His unwavering commitment to God's love, even in the face of death, is a powerful reminder that love rooted in faith transcends time and circumstance.

At the heart of both Candlemas and Saint Valentine's Day is the love of God made manifest in Jesus Christ. Candlemas shows us God's love as a light that illuminates the path of salvation, guiding us through the uncertainties of life. Saint Valentine's Day, invites us to reflect on how we can embody Christ's love in our relationships — with our families, friends, and communities.

This February, as we hold candles in our hands to mark Candlemas and share tokens of affection on Valentine's Day, let us remember the source of all love: God, who sent His Son into the world for our redemption. May we be inspired to bring Christ's light and love to all we meet, shining brightly as we wait for Spring, and the lighter and longer days to come.

Rev'd Catriona



FEBRUARY CHURCH SERVICES

Date	Service	Church
2nd Feb	Presentation of Christ	
8:00am	BCP Holy Communion	Walsham
11:00am	Candlemas Communion	Walsham
9th Feb	4th Sunday before Lent	
8:00am	BCP Holy Communion	Walsham
9:30am	Holy Communion	Westhorpe
11:00am	Holy Communion	Finningham
11:00am	Songs of Praise	Walsham
16th Feb	3rd Sunday before Lent	
8:00am	BCP Holy Communion	Walsham
9:30am	Holy Communion	Badwell Ash
23rd Feb	2nd Sunday before Lent	
11:00am	Holy Communion	Walsham
3:00pm	Evensong	Westhorpe
2nd Mar	Sunday next before Lent	
8:00am	BCP Holy Communion	Walsham
11:00am	Holy Communion	Walsham
5th Mar		
11:00am	Ash Wednesday Service	Walsham
7:00pm	Ash Wednesday Service	Badwell Ash

 The
Old Tea Room
Veterinary Surgery 

For a professional caring service

Tel: 01359 241761

www.elmswellvets.co.uk

Station Road, Elmswell,
Bury St Edmunds,
IP30 9HA

A member of
Stowe Veterinary Group

www.stovevetgroup.co.uk



WILDLIFE IN FEBRUARY

It is February, now is an exciting time as we look forward to planning our gardens and allotments. At the moment our gardens may lack colour from plants and life in the way of insects, you may think that there are no insects around, but you would be wrong. If you spend some time near damp woodland with plenty of soggy leaves around you may notice little swarms of flies around jerking up and down in the air. They are easily seen when against the light, these are Winter Gnats, also known as Craneflies. The larvae of the Cranefly will feed on decaying matter, so you may also see them on your compost heap too. The mid-air swarms you will see are to do with breeding. The 'dancers' are usually the males competing for the females. Their frantic flight can make their wings and legs go a golden colour in the low light winter sunshine.

Listen and watch out for Bumblebee's this month that may be tempted out by a mild and sunny day. With the days starting to become longer and the daytime temperature becoming milder, Queen Bees will take advantage of early flowers for their nectar. They will also be on the lookout for a suitable place for a hive. Just listening to their buzz can give you a warm feeling that Spring is once more on the way.

Now is a time to also put up bird boxes as most species will now be on the search for a nesting site. One of our first birds you are likely to see first this year gathering nesting material is the Long-Tailed Tit. They make extraordinary nests and because of this construction takes around 3 weeks longer than most other songbirds. The Male and Female will work as a team, they will select a site low down in a thorny bush, hedge or a climbing plant. From there they will weave an oval shape ball from moss adding a small entrance at the top, then they will cover this with grey Lichen. They will then proceed to line it with around 1,500 white down feathers with the fascinating part being that they will then bind this altogether with Spider Silk! The female will lay around 8-12 eggs by March to early April.

On your walks in the country look out and admire the Hazel. Hazel will produce female flowers and Male Catkins at this time of the year. If you take a closer look, you will see that these tiny flowers are bright pink in colour, and they are waiting for the breeze to catch the pollen off of the Catkins which hang from the bare branches. Hazel may be the earliest to produce Catkins but this is not the only one to produce them, they are also found on Willow species and Alder.

Angie Bennington





WHAT'S ON AT THE BLUE BOAR

Free room hire is available

Live music once a month from 8.30pm
Karaoke on Friday 14th and 28th February

Free pool every Wednesday from 6pm
Roast Dinners for £10 every Wednesday

Burger, chips and a pint for
£15 every Thursday

Take away service Monday - Saturday
from 4pm

10% off when spending
over £25 on food.

This voucher can be
redeemed from
1st to 28th February

To contact us please call on 01359 256944

JAY NICHOLLS & CO.
SPECIALISTS IN
PERIOD PROPERTY
RESTORATION

renovation work.
all repairs, alterations,
conversions, roofing,
decoration etc.

Quality work guaranteed

☎ 01449 781375 or 07804957190

Complete Building Service

Ear We Go

Mobile Ear Wax Removal
Microsuction & Irrigation

My name is Georgie
Please call, text or email for
an appointment

07921550958

Earwegol2@gmail.com
Fully insured and DBS

EPIPHANY SINGERS

St Mary's church once again resounded to beautiful harmonies as the Epiphany Singers gave their annual concert on Saturday 5th January. Under the exacting direction of Simon Carrington they gave a wonderful performance with a great variety of Epiphany carols and songs. Old favourites such as Cornelius' The Three Kings, the solo sung magnificently by Edward Caswell, were interspersed by less familiar but equally spellbinding pieces.

David Hill put the organ through its paces, giving a virtuoso rendition of Widor's Toccata, as well as a cantata by Bach.

They all then returned to the church on Sunday to sing a choral Eucharist, with Schubert's Mass in G, among other pieces.

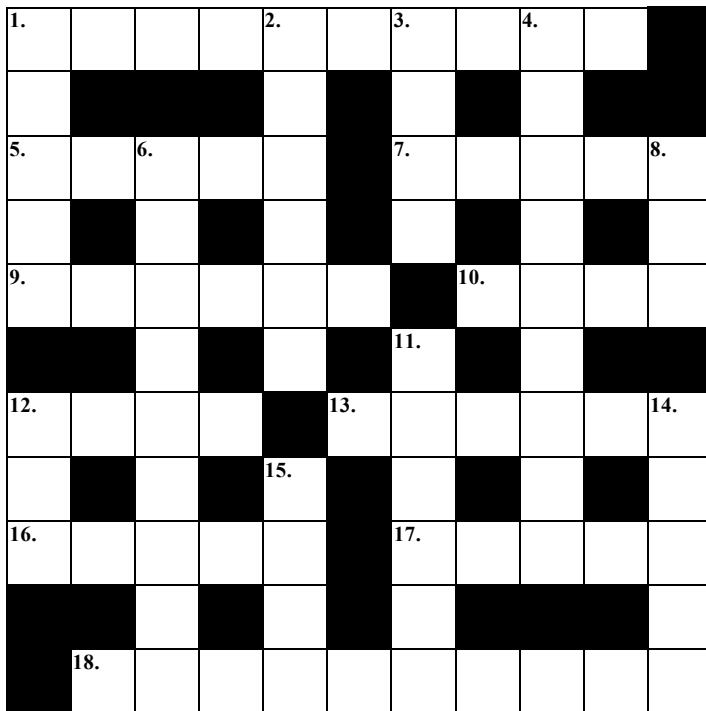
We continue to be astounded that such a high calibre group of musicians bestow Walsham with their talents solely in return for a weekend of Walsham's warm hospitality.

As well as the singers, I would like to thank everyone in the benefice who helped make the weekend a success. This includes the hosts, Catriona, caterers, stewards, and a lot of other helpers. We could not do this without you.

We raised £2226 towards the church fabric fund. Our thanks to all who donated.

Gabrielle Hunt

WALSHAM OBSERVER CROSSWORD



10. Such openings gives us encouragement. (4)

12. It's wrong to come in first or third. (4)

13. Such lifts are for the birds. (6)

16. Can it be right to produce an essay? (5)

17. Spaghetti is as apt to be tangled as any food. (5)

18. Rising assistant needs to be stopped. (5,5)

DOWN

1. It's near to being shut. (5)

2. It's been gin each time producing power. (6)

3. Surely bears have listeners enthralled! (4)

4. A small prisoner found starting small puzzles. (9)

6. I'm partial to a lack of favour. (9)

8. Is one for another a good looker? (3)

11. Cancer and Capricorn have the topic about right. (6)

12. Two can be made to pull. (3)

14. Maybe it's not a leg. (5)

15. Shed one as you rip and race away. (4)

ACROSS

1. A fencer once organised a big meeting. (10)

5. Such indebtedness is found in growing costs. (5)

7. I spread my anger about. (5)

9. In the end the peace somehow will get bigger. (6)



WEST SUFFOLK HORSEBOX SERVICES LTD



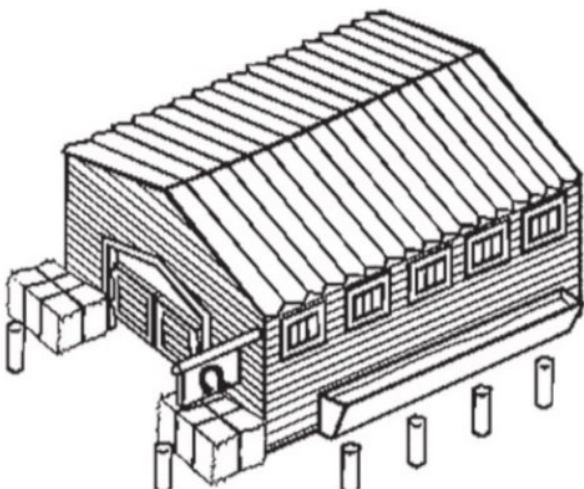
We are a local, family run garage in Walsham-le-Willows who deal in, Horsebox, Van, 4x4, Car and Lorry servicing and repairs.

**Welding - Air conditioning - Car and HGV Diagnostics - Tyres
HGV MoT Preparation and Presentation
Hybrid and Electrical Qualified Technician**

**NEW to 2022. Car, Van, minibus and 4x4 MoT bay. Classes 4,5 and 7
Vehicle Collection and Courtesy Car Available, Subject to availability.**

**Unit 2, Old Bomb Store Summer Road IP31 3AJ
Telephone 01359-259994
Email wshorseboxservices@gmail.com**

CHURCH FARM Walsham-le-Willows SELF STORAGE



Local family owned and operated.



Secure units from just £100 per month.



State-of-the art 24hr CCTV surveillance.



Easy access with on-site parking.



Convenient location, in the village centre.

*Interested? Please contact:
George Thomas, 07970 549011,
georget@sentry.co.uk,
or Joseph Light, 07970 549019,
joseph.light@sentry.co.uk*

SPORTS CLUB REPORT

Sports Club members were truly saddened to learn of the passing of our Sports club President Mr Richard Martineau. Over the years both Richard and the Martineau family have given a lot of support and have been very generous towards the Sports Club and it is true to say that without them we wouldn't have the facilities we enjoy today and be the envy of much larger places than Walsham. Our thoughts and prayers are with the Martineau family and Richard's many friends at this very sad time.

Football

We were scheduled to play our 4th Round match in the FA vase on Jan 12th (which is as far as we have ever got) against a Whitstable team from Kent but despite great efforts by Club volunteers, the freezing weather meant the game had to be called off. It is rescheduled for 19th Jan so we might still get the result in the stop press of your Feb Observer. Win or lose, it will have been quite a result for the boys to have at least featured as the only Suffolk side still in the competition.

Just prior to Christmas we played host to Dereham Town in the league and won the match in the very last minute with a goal from Ethan Garcia.

On Boxing Day we made the trip to Long Melford and won 5-0. Twinny scored a hat trick with Reece Lanchester and Jesse Wyatt the other goal scorers. Since then, the weather has played havoc with our fixtures.

The under 23s currently sit third in their league. Their last game before Christmas saw them defeat their Needham Market counterparts 4-1 away.

The under 18s are currently in second place in their league. A point behind leaders Bury Town with a game in hand. Just prior to Christmas they beat Brantham Athletic 6-2 in the Suffolk under 18s Midweek Cup.

The Vets sit top of their division following a 5-2 win at Coplestonians which remains the only fixture played so far by a Walsham Team in 2025.

Forthcoming Home Fixtures for February

First Team

Sat 1st v Kirkley and Pakefield 3pm

Sat 22nd v Great Yarmouth Town 3pm

Under 23s

Sat 8th v Lakenheath 3pm

Sat 15th v Whitton United 3pm

Under 18s

Thurs 6th v Sporting 87 7.45pm

Thurs 27th v AFC Sudbury 7.45pm

Suffolk under 18s Midweek Cup

Veterans

Sun 2nd v Ransomes Sports 2pm

Gordon Ross



CLARKES

COUNTRY STORES

YOUR LOCAL COUNTRY CLOTHING, FOOTWEAR AND GUN SHOP



SCHÖFFEL . BARBOUR . CREW . JOULES . SEASALT . DUBARRY
AIGLE . LE CHAMEAU



GUN ROOM . SHOOTING ACCESSORIES
CLOTHING BY RIDGELINE, PERCUSSION, HOGGS



LARGE SELECTION OF CARTRIDGES & AMMUNITION



Find us at:

The Street
Walsham-le-Willows
Bury St. Edmunds
Suffolk, IP31 3BA



01359 259 555



info@clarkescountrystores.co.uk



www.clarkescountrystores.co.uk

Main Store
Opening Hours

Mon - Fri : 7:30am - 5:00pm

Sat : 8:00am - 4:00pm



Pawfect Moments Dog Services

Committed to ensuring your animals always look and feel their best

For over 6 years I have provided a fully insured, fully qualified, experienced, compassionate and professional service.

As an owner of 3 dogs, I recognise how special your pets are. I care and look after my clients' pets as if they were my own. I cover all of your animals needs if you are unable to be around.

I am also a fully qualified Dog Groomer with a Level 3 Diploma in Dog Grooming, offering appointments at evenings and weekends.

Supervision services:

- Dog walking
- Pop-in services for puppies, dogs, cats, chickens and ducks at their homes
- Drop-in service to administer medication

Professional Dog Grooming:

- Bathing & drying
- Nail clipping
- Deshedding
- Full grooms using clippers and scissors
- Hand Stripping



References and Testimonials available on request

Caroline Morris: 07843 248 411

cdv_11@hotmail.com

WALSHAM LE WILLOWS SPORTS CLUB

Social Committee review of 2024

2024 was an active and successful year for the social side of the club with events not only organised by the Social Committee but also some arranged by sections of the club such as cricket and football, additionally some individual members also arranged old and new activities.

We again put on a March 'Irish Night' with a live group, the Great Craic, helping to keep the party going (they are again booked for this year). While other March events included Quiz nights and regular sessions of Bingo on Sunday nights which continued throughout the year.

From May live Friday Music nights continued during the summer months and the annual Family Fun Day at the end of May whilst suffering from wet weather remained a great success overall.

Later in the year the Sports club arranged for a large Marquee to be erected and this was done on the 5th September in time to be used and decorated for a wedding. The Marquee was also used for the annual 'Sports' dinner with close to two hundred attending and in addition on the Sunday afternoon a wonderful 'afternoon tea' event was arranged by one of the Committee members which proved a great success and was followed later that evening by Bingo.

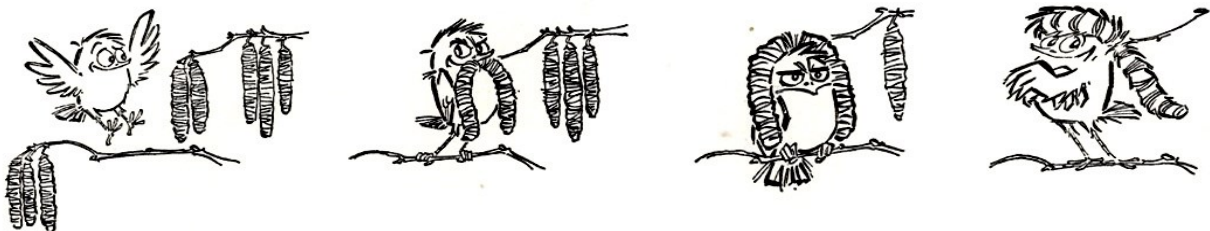
Additional events arranged for the rest of the year included another 'Trailer Night' which proved successful with the proceeds going to charity. We also had a 'Halloween party' at the end of October which was very well attended and a 'Race night' was fitted into the November schedules. Additionally, two new events were added to our program with a 'Comedy Night' and a 'Drag Night', both of which were 'sold out' and very well received.

Early December saw the annual 'Walking Sports' Diner attended by close to 70 members and enjoyed by all.

The Social committee continues to look for new events for 2025 and on this point it's worth mentioning that having started a Friday night darts session in September we have now joined a regular Friday night 'Darts League' which started on 3rd January and playing every other Friday and we are arranging quiz nights (including a new 'Interactive quiz') on the nights when there is no darts match. The first of the 'Interactive quiz' is scheduled for Sunday 12th January at 7pm and we encourage you all to come along and enjoy the fun.

Happy New Year

Rob Matthews
(Social Committee Secretary)



TIME FOR YOU™

DOMESTIC CLEANING

Are you tired of cleaning?



We have the
right cleaner
waiting
to help
you.

Regular - Weekly - Cleaner

01359 258991

Typically £16 per hour

www.timeforyousuffolk.co.uk



CHIMNEY SWEEP



ECO SWEEP
CHIMNEY SERVICES



- POWER SWEEP METHOD USED FOR A MORE THOROUGH CLEAN THAN A BRUSH
- FULLY INSURED
- INSURANCE RECOGNISED CERTIFICATES ISSUED ON EVERY SWEEP
- GOLD MASTER MEMBER OF GUILD OF MASTER CHIMNEY SWEEPS
- ALL CHIMNEYS, WOOD/MULTI FUEL BURNERS, AGA, BOILER FLUES SWEPT
- BIRD GUARDS FITTED

TEL: (01359) 232335

EMAIL: ecosweep@live.com

WILLOWSERVE LTD

Plumbing & Heating Services

- ✓ Worcester Bosch Approved Installers with up to 12 Years Warranty on Worcester Bosh Boilers
- ✓ GASSAFE, OFTEC, C.I.P.H.E, CHECKATRADE, TRADING STANDARDS approved
- ✓ Replacement Boilers, Hot Water Cylinders, Underfloor Heating, Servicing, Repairs, General Plumbing, Bathrooms etc. FREE QUOTATIONS

For a Professional Reliable Service

Tel: 01359 259886 Mobile: 07771 557937

willowserve_ltd@hotmail.com



NEVER CAN SAY GOODBYE

The attic has reached bursting point
And can't take any more
There's twenty years of piled up things
Now spilling through the door.
The shelves strain under objects that
'Just can't be thrown away'.
And boxes brim with 'useful things
We're bound to need one day'.
Drawers overflow with endless junk
(Saved for posterity),
Plus things in 'why the hell did we
Keep that?'-type category.

But now it's time to sort it out
A task that's monumental.
No room here for nostalgia
Or feeling sentimental.
A ruthless attitude's required
A rigorous attack
With gritted teeth and great resolve
Hold out the first black sack!
Determinedly, I seize a coat
(With wildlife living in it),
And feeling very smug
And strong, I purposefully bin it.

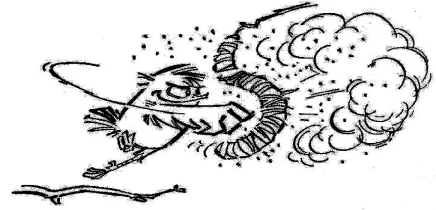
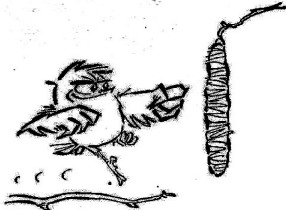
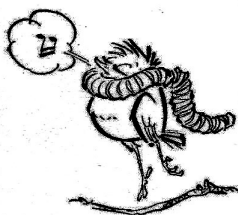
And in this vein, I carry on
For half an hour or so.
From time to time heard muttering,
'Oh yes, *this* has to go.'
And so I happily discard
The mildewed and the musty
The 'decades past its peak of chic',
The broken and the rusty.
And now there is no stopping me
I fill sack after sack
(*There's nothing to this sorting lark ...
Soon have my attic back*).

But maybe I've been hasty
Re ease of task at hand.
For soon nostalgia hits me
And things don't go as planned;
The sight of all the baby toys
Has made me misty-eyed,
I try on once-prized garments,
Bell-bottomed and tie-dyed.
I read the bundled letters
I sigh, I cry, I laugh.
I go through *all* the school reports
And *every* photograph.

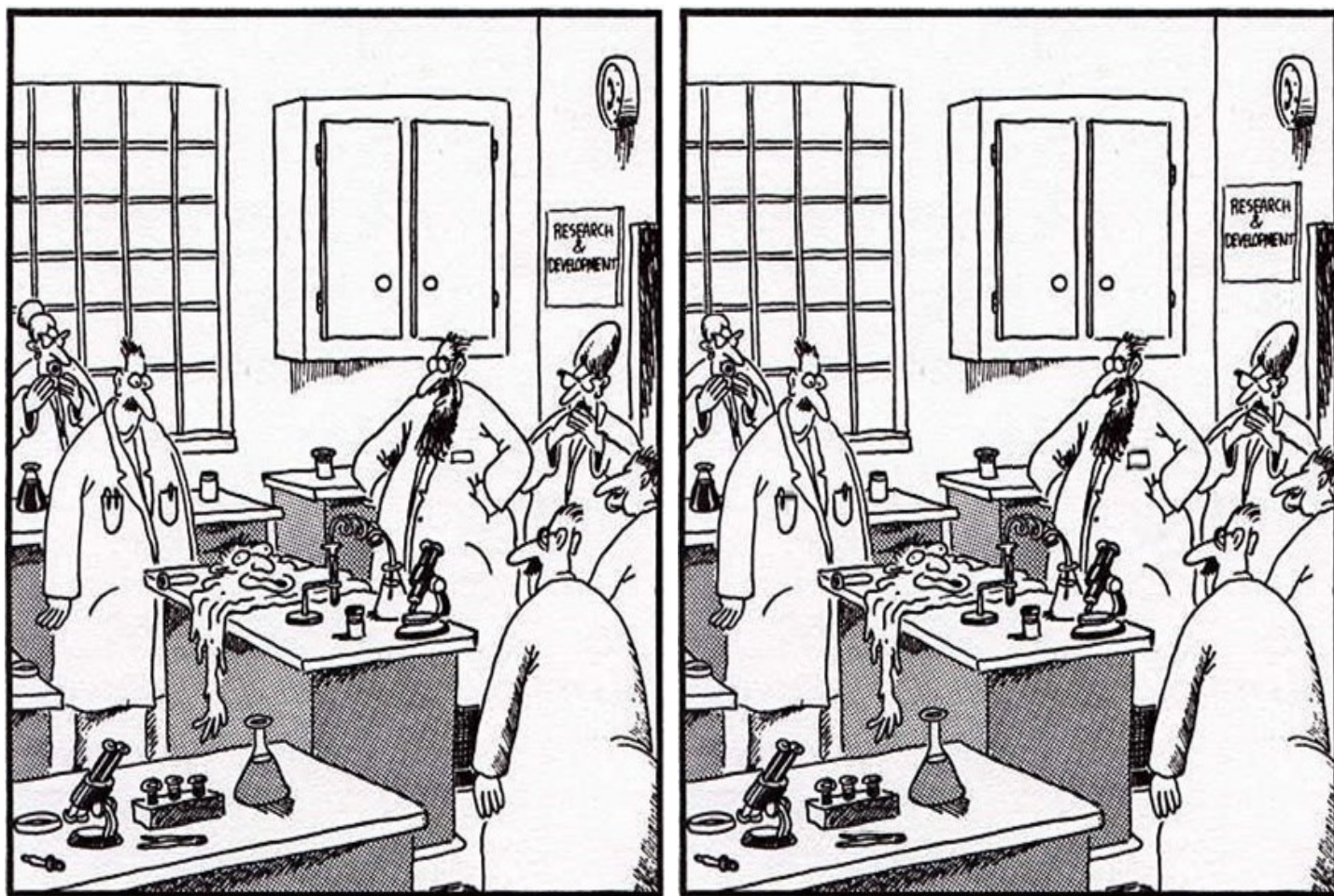
The hours pass by unnoticed
As I rummage through my past
But when you're sorting memories
You can't go very fast.

Much later, black sacks piled in road
It hits me in a flash;
I can't just chuck my life away!
I've been extremely rash.
To part with my own history
Would be a crime, a sin:
When no one's looking I'll nip out
And bring the lot back in!

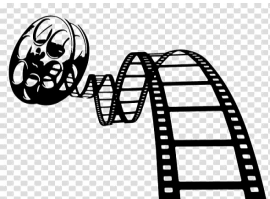
*From Mummy Said The 'B' Word
By Judy Rose
Headline Book Publishing
ISBN 0 7472 5831 7*



SPOT THE DIFFERENCE



There are ten differences between these two pictures, see if you can find them all before something really nasty gets produced in the laboratory!



STANTON VILLAGE CINEMA

Friday 14th February at 7:30pm

CATS (PG)



James Corden, Judi Dench, Idris Elba & Ian McKellen

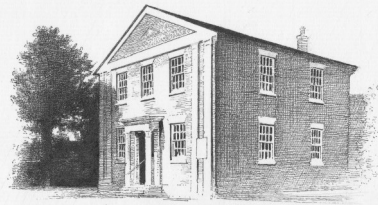
Victoria, a young white cat, is abandoned by her owner on the streets of London in the middle of the night. Witnessing this, a group of alley cats introduces themselves as the "Jellicles." Mr. Mistoffelees, Munkustrap, Cassandra, and Demeter take Victoria under their wing and show her the world of the Jellicles as they prepare for the Jellicle Ball—an annual ceremony where cats compete to be chosen to ascend to the Heaviside Layer and be granted a new life.

Tickets on the door, adults £5.00—under 17's: £3.00

Tea/coffee and refreshments

Future films will be shown on the second Friday of each month.

Next film is PADDINGTON IN PERU (15) Friday 14th March



Walsham Congregational Church

The Street, Walsham-le-Willows, Suffolk. IP31 3AZ
Church Secretary (John Landymore) 01359 - 258986

We are open for worship each Sunday at 11.00 & 6.30 so why not come along? Please be assured of a warm welcome; it would be lovely to see you.

Trading Your Soul

Roy Herbert Thompson was a Canadian entrepreneur who became a very wealthy and successful businessman owning a multi-national corporation. Born 1894 in Toronto, the son of a barber, he worked his way through Business College and, after several different ventures, ended up selling radios in Northern Ontario. Thompson found it tough selling radios in an area where there were no radio stations so, after months of drudgery, decided to put a station on-air himself. More stations in different towns followed and, after buying a printing press from a defunct newspaper, his first newspaper, 'The Press' went into print. Roy Thompson put all his earnings into acquiring newspapers around the world. He also owned half a dozen radio stations outside Canada and a dozen television stations and in 1957, successfully bid for Scottish Television, which he later described as, "a licence to print money". In 1959, he purchased the Kemsley group of newspapers, the largest in Great Britain, which included the Sunday Times. He was bestowed a Peerage in 1959, becoming 'Baron Thompson of Fleet'.

The business empire that he built and controlled was vast; he would continually expand until he owned more than two hundred newspapers in Canada, the United States, and the United Kingdom as well two hundred and ninety other companies. Thompson died in August 1976, and it is estimated that his assets would equate to around two hundred and twenty-four billion pounds in today's money – truly a rise 'from rags to riches'!

On one occasion a colleague had asked Thompson what he would give to own the New York Times. Quick as a flash, he replied, "I think I would mortgage my soul". How fearful that anyone would ever consider trading with their soul! Yet it is the case that relatively few people in this world would truly consider their soul, or the value of that never dying soul. Many there are however like Roy Herbert Thompson who are so taken up with the things of this world that no thought is given to the weightier matters of life, death, eternity, Heaven, and Hell. The Bible certainly does not say that success, status, or great wealth are wrong but anything that takes the first place in our lives, that rightfully belongs to God, is idolatry, and a great danger to the immortal soul.

In the Bible, Judas Iscariot sold Jesus Christ the Saviour, and his hope of Heaven for thirty pieces of silver (*Matthew 26:15*). It is imperative not to make this same awful mistake. Remember the words of the Lord Jesus Christ: "***For what shall it profit a man, if he shall gain the whole world, and lose his own soul? Or what shall a man give in exchange for his soul?***" (*Mark 8:36-37*). It would be the worst bargain that could ever be made to exchange our soul, even if the wealth or acclaim of the whole world were received in return. We are also told of a successful farmer who said, "***I will pull down my barns and build greater; and there will I bestow all my fruits and my goods. And I will say to my soul, Soul, thou hast much goods laid up for many years; take thine ease, eat, drink, and be merry. But God said unto him, Thou fool, this night thy soul shall be required of thee, then whose shall these things be, which thou hast provided? So is he that layeth up treasure for himself, and is not rich toward God.***" (*Luke 12:18-21*)

It is good to remember that there is nothing in this old world that is more important than to know that our souls are saved, and safe, for time and eternity.

REGULAR

MONDAY

Community Lunch Village Hall
2nd Monday 12:45pm
Walking Football Sports Club
8:00pm till 9:00pm

TUESDAY

Walking Netball Sports Club
10:00am till 11:00am
Pilates Class Village Hall
1:30pm till 2:30pm
Walking Football Sports Club
2:00pm till 3:00pm

WEDNESDAY

Pilates Classes Village Hall
9:00am till 10:00am
10.15am till 11.15am
Yoga Sports Club
10:00am till 11:30am
Positive Steps Sports Club
11:30am till 12:30pm
Wednesday Wanders Sports Club
11:30am till 12:30pm
Carpet Bowls Sports Club
2:30pm till 4:00pm
WI Meeting Priory Room
7:30pm Second Wed of the Month

EVENTS

Parish Council Village Hall
(Public Meeting)
7.00pm Second Wed of the Month

THURSDAY

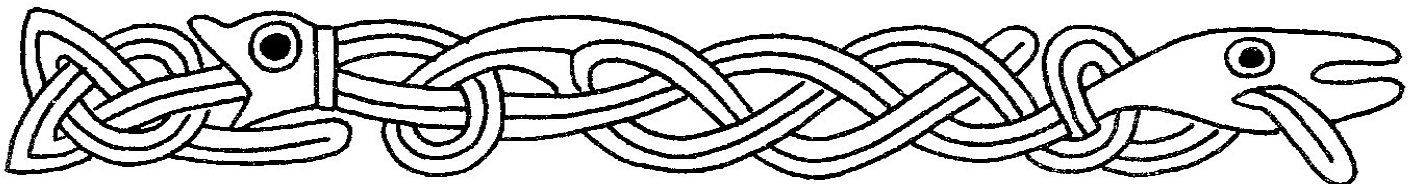
Coffee Shop Village Hall
10:30am till 12.30pm
Post Office Van Village Hall
11:00am till Noon
Yoga Sports Club
1:15 pm till 2:15pm
Walking Football Sports Club
2:00pm till 3:00pm
Pétanque Sports Club
2.00pm till Bouled Out
Walking Netball Sports Club
6:00pm till 7:00pm

FRIDAY

Cardio Tennis Sports Club
12noon till 1:00pm

SATURDAY

SUNDAY



What is the name commonly given to the smallest of a litter?

ALL THE ANSWERS

Page Bottom Quiz

1. Green, 2. None, 3. The Krays, 4. Act, 5. Purchased it from France,
6. Happy Birthday, 7. Caspian Sea, 8. Manchester, 9. Rowan, 10. Lady Jane Grey,
11. Charles Atlas, 12. Michael Caine, 13. St Peter, 14. One with thick skin,
15. King Alfred, 16. The eider duck, 17. The Vikings, 18. Hanging, 19. At sea,
20. Coffee beans, 21. On the moon, 22. Lightning war, 23. Lord Haw-Haw,
24. The Caledonian Canal, 25. Greece and Albania, 26. The Cyclades,
27. The South Sea Bubble, 28. Dunnock, 29. Fish, 30. Henry VIII, 31. Bob Geldof,
32. Wellington (NZ), 33. The Bible, 34. Doing time in prison,
35. Travellers cheques, 36. Gert Frobe, 37. The Fosse Way, 38. Calvados,
39. Government Chief Whip, 40. Captain Nemo, 41. Magyar, 42. Runt,
43. Buried standing up, 44. Fallow deer, 45. Cardiff,

Sudoku

8	2	5	3	7	4	9	6	1
4	3	1	6	9	8	5	2	7
7	6	9	2	5	1	8	3	4
2	5	3	9	1	6	4	7	8
1	9	7	4	8	3	2	5	6
6	4	8	5	2	7	3	1	9
3	8	4	7	6	2	1	9	5
9	7	2	1	4	5	6	8	3
5	1	6	8	3	9	7	4	2

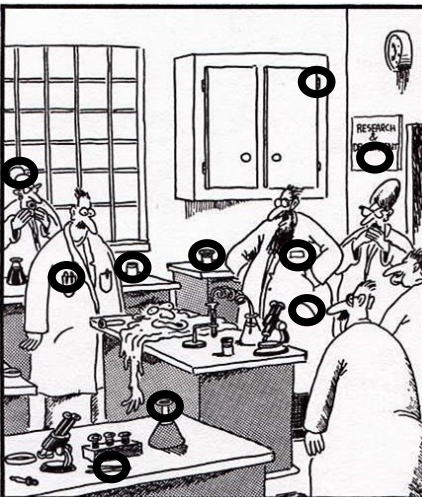
Crossword

C	O	N	F	E	R	E	N	C	E
L				N		A		O	
O	W	I	N	G		R	A	N	G
S		M		I		S		F	
E	X	P	A	N	D		H	O	P
		A		E		T		U	
T	O	R	T		C	R	A	N	E
O		T		T		O		D	
W	R	I	T	E		P	A	S	T
		A		A		I			N
		A	L	A	R	M	C	L	O

More or Less

4	3	2	1	5
1	5	4	3	2
5	2	1	4	3
2	1	3	5	4
3	4	5	2	1

Spot the Difference



Searching for Words

Abet	Able	Ale	Alter	Are
Area	Ate	Bat	Bata	Bate
Bater	Bear	Beat	Bee	Beer
Beet	Belt	Bet	Beta	Blare
Bleat	Earl	Eat	Eel	Era
Eta	Lat	Late	Later	Lea
Lear	Lee	Let	Rale	Rat
Rate	Rateable	Real	Rebel	Ret
Tab	Table	Tale	Tar	Tare
Tea	Teal	Tear	Tee	

Relatable (50)

USEFUL TELEPHONE NUMBERS

Community Council Secretary Rob Matthews	07564 906848	Ixworth Stanton Botesdale Woolpit	01359-230252 01359-251192 01379-898295 01359-240298
Police Suffolk Police Stowmarket	01473-613500 01473-383400	Parish Council Chair Richard Belson	01359-258868 richardbelson@ btinternet.com
Neighbourhood Watch		Parish Council Clerk Kevin Boardley	parishclerk@ walsham-le- willows.org
Anglian Water Emergencies (24hr) Accounts	08457-145145 0800-919155	District Councillor Richard Winch	07931709486
UK Power Networks	0800-0294285	County Councillor Mrs Jessica Flemming	01449-711065
British Telecom Customer Service Line Faults Surgeries	150 151	Suffolk County Council	03456-066067
		Member of Parliament Adrian Ramsey	017534 933356 adrian@waveneyvalley.greenparty.org.uk

VILLAGE ORGANISATION CONTACTS

Allotments Group
Mel Wasley / Debbie Licata
walshamallotments@gmail.com

History Group
Frances Jenner 01359-259242
frances.jenner@hotmail.com

Horticultural Show
Debbie Licata 01359 259686
debbiewatson2916@gmail.com

Sports Club
Mike Powles 07379089890
mike.powles@btconnect.com

Walsham Wild Wood
Lorna MacKinnon 01359 259140
mackinnonlorna@gmail.com

Women's Institute
Fern Wakenham 01359 252153
f.wakeham@eyeprimary.org.uk

Pétanque
Graham Portlock
graham.portlock@pm.me



WALSHAM LE WILLOWS VILLAGE HALL

The Community Council committee
welcome you to the

MVH Coffee Shop
In the Garden and the Hall

Open every Thursday

From a time of 10.30am to 12.30pm

The Post Office van is there

From 11:00am till 12:00pm

Come and enjoy a chat and

A cuppa and a bite

Just for ‘a couple of quid.’